

*DREAMS FROM
THE ANTRHOPOCENE*

ROBIN HEXTRUM





Left Behind, 4 x 5 feet, Oil on Canvas, 2012



Swept Away 34 x 56 in, Oil on Canvas, 2011

Blue Dragon
12 x 12 inches
Oil on Panel
2014





Slide
6 x 12 inches
Oil on Panel, 2015



Silos
12 x 12 inches
Oil on Panel
2014



Black Horse, 6 x 12 inches, Oil on Panel, 2014



RV, 11 x 14 inches, Oil on Panel, 2014



Donut Shop
8 x 8 inches
Oil on Panel
2015



Statues
9 x 12 inches
Oil on Panel
2015



Red Storm, 36 x 48 inches, Oil on Canvas 2016



Lost and Found in Paradise, 12 x 12 inches, Oil on Panel, 2017



Out of the Flames 18 x 24 in. Oil on Panel 2019



Flowers Growing in a New Climate 38 x 68 in. Oil on Linen, 2021



*Still Life with Flowers
and a Watch*

by Abraham Mignon
1660-1679



Still Life for a Human Epoch 40 x 60 in. Oil on Canvas, 2022



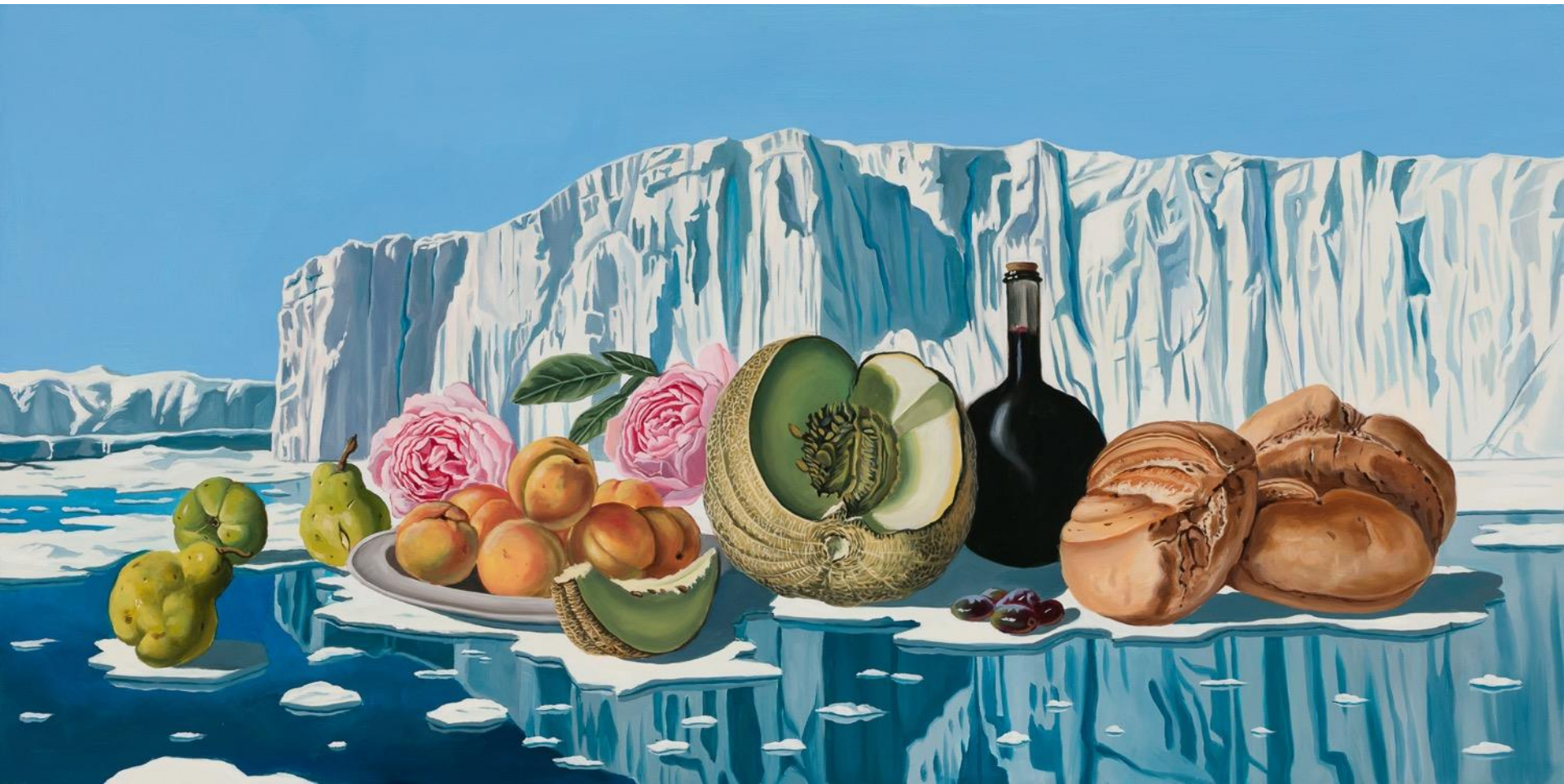
Tulips with Glacier 16 x 20 in. Oil on Panel, 2021



Still Life with Wine and Glaciers 16x20 in. Oil on Panel, 2022



Eine Kleine Nachtmusik (A Little Night Music) by Dorothea Tanning 1943



Anthropocene Still Life 12x24 in. Oil on Panel, 2022



Indian Rhino on Ice 16x20 in. Oil on Aluminum Panel, 2022



Glaciers Melting into the Andes 48x60 in. Oil on Linen, 2022



Resting Place
48x48 in. Oil on Linen
2022



*Closing Our Eyes to
the Chaos Around Us*
16x20 in.
2023



*A Buffalo's Perspective
on American Progress*
24x24 in. Oil on Panel
2023